



Australian Hammer Supplies Hire
Unit 3/32 Williamson Road
Ingleburn
NSW 2565

Minor Service

RP046901

Customer AUSTRALIAN HAMMER SUPPLIES HIRE Resource Collin Graham
Contact

Address AUSTRALIAN HAMMER SUPPLIES HIRE Job Type Minor Service
Unit 3/32 WILLIAMSON RD Reference
INGLEBURN Date 2025-07-31 15:53 - 16:01
2565 Job duration 2:0:00
Driving duration 00:00:00
Distance travelled 0 km

Notes 2250HR Minor Service
Technician note from last service: Need to be replaced
transmission oil and filter on next service

Customer/Technician

Resource notes

Minor Service

Answer

Notes

General Info/Comments

250

Machine Hours

2250

Next Service Due Hours

2500

1.1 Wear Correct PPE at all times

PASS

1.2 All isolation and safe work procedures must be followed

PASS

1.3 Identify task hazards and controls utilising hierarchy or controls model

PASS

1.4 Ensure a competent operator and spotter is utilised to move mobile equipment

PASS

1.5 Ensure all mobile equipment is fundamentally stable

PASS

1.6 Ensure three points of contact is maintained

PASS

during access and egress

1.7 Ensure acceptable housekeeping standards are maintained at all times PASS

2.1 Check all work lights, beacon & reverse alarm for operation PASS

2.2 Test all dash warning lights, gauges and audible alarms for correct operation PASS

2.3 Check idle timer for correct shut down operation PASS

2.4 Check operation of all three emergency stop buttons PASS

2.5 Check operation of horn PASS

2.6 Check operation of reverse camera PASS

2.7 Check alternator charge voltage - ACTUAL _____ V PASS

2.8 Check operation of auto grease system by manually activating timer N/A

2.9 Check fire system control panel for 'Normal' N/A

5.1 Ensure fire suppression bottle and components are securely mounted and in good condition N/A

5.2 Ensure fire suppression is correctly charged N/A

5.3 Inspect last charge date - ACTUAL N/A

5.4 Check all fire extinguishers are securely mounted and in good condition PASS

5.5 Check all fire extinguishers are correctly charged PASS

5.6 Inspect last charge date - ACTUAL PASS

6.1 Perform engine valve set N/A

6.2 Inspect air intake system hoses, pipes, clamps for signs of dirt ingress PASS

6.3 Inspect engine for oil or fuel leaks PASS

6.4 Inspect engine components for missing clamps PASS

6.5 Inspect exhaust system for signs of leaks, loose bolts or missing clamps PASS

6.6 Inspect turbo for security and signs of leaks PASS

6.7 Inspect condition of exhaust lagging PASS

6.8 Inspect engine mounts for condition and loose hardware PASS

6.9 Inspect alternator mount condition and adjustment PASS

6.10 Inspect wiring condition and security	PASS
6.11 Inspect engine belts	PASS
7.1 Check coolant level	PASS
7.2 Check condition of radiator cap	PASS
7.3 Check condition of radiator core	PASS
7.4 Check cooling system for signs of leaks	PASS
7.5 Check hose and clamp condition	PASS
7.6 Inspect fan condition and operation	PASS
7.7 Inspect radiator and fan guard condition	PASS
8.1 Inspect swing transmission for signs of leaks	N/A
8.2 Inspect swing transmission oil level	N/A
9.1 Check hydraulic oil level	PASS
9.2 Inspect hydraulic cylinders for leaks and security	PASS
9.3 Inspect hydraulic hoses for leaks, damage, security	PASS
9.4 Inspect hydraulic pump condition, leaks, security	PASS
9.5 Check Pilot Accumulator operation as per OEM Maintenance Procedure - Test Boom Down Functionality with engine off	PASS
10.1 Inspect LHS final drive mount condition for leaks and security	N/A
10.2 Inspect LHS oil level and mag plug condition	N/A
10.3 Inspect RHS final drive mount condition for leaks and security	N/A
10.4 Inspect RHS oil level and mag plug condition	N/A
11.1 Inspect LHS track tension	N/A
11.2 Inspect RHS track tension	N/A
11.3 Inspect tracks for loose/missing bolts	N/A
11.4 Inspect load and carrier rollers for signs of leaks	N/A
11.5 Inspect idlers for signs of leaks	N/A
11.6 Inspect sprocket segments condition	N/A
11.7 Inspect track frame for cracks, lose or missing hardware	N/A
12.1 Check panels for damage and security	PASS
12.2 Check access steps and walkway condition	PASS

12.3 Inspect boom condition – cracks, missing clamps, damaged pipes, excessive movement, lubrication	N/A
12.4 Inspect stick condition – cracks, missing clamps, damaged pipes, excessive movement, lubrication	N/A
12.5 Inspect quick hitch condition and operation	N/A
12.6 Inspect bucket condition – cracks, wear, damage, mounts	N/A
12.7 Inspect GET condition and hardware	N/A
13.1 Check battery condition	PASS
13.2 Check battery terminal condition	PASS
13.3 Check battery security	PASS
13.4 Check battery box drain is clear	PASS
13.5 Check wiring condition and security	PASS
14.1 Check all points for acceptable lubrication	PASS
14.2 Inspect grease system operation	N/A
14.3 Check grease line condition	PASS
14.4 Refill grease tank	N/A
14.5 Lubricate bucket linkage	N/A
14.6 Lubricate blade linkage	N/A
14.7 Lubricate boom & stick linkage	N/A
14.8 Lubricate swing bearing	N/A
15.1 Check all doors for correct opening and closing adjustments and operation	N/A
15.2 Inspect condition of door seals	N/A
15.3 Check window glass and seal condition	N/A
15.4 Check mirror condition and adjustments	PASS
15.5 Fill window washer reservoir	N/A
15.6 Inspect air con vents condition	N/A
15.7 Inspect seat belt and mounting hardware	PASS
15.8 Inspect seat condition, operation and mounting	PASS
15.9 Replace cabin A/C filter	N/A
16.1 Engine	PASS
17.1 All inspections have been completed and rectified as required	PASS
17.2 All safety related defects have been repaired or	PASS



Australian Hammer Supplies Hire
Unit 3/32 Williamson Road
Ingleburn
NSW 2565

reported

17.3 All defects have been noted and reported	PASS
--	------

17.4 All fluids are at correct level and drain plugs tight	PASS
---	------

17.5 All oil samples have visually been inspected and any notable signs of contamination have been reported	PASS
--	------

17.6 All replaced filters have been cut and inspected and photos added to CAT Inspect and reported to supervisor	PASS
---	------

17.7 Machine has been recommissioned and ready for operation	PASS
---	------

17.8 PM service notification marked off in Vision Link	PASS
---	------

18.1 DEFECTS IDENTIFIED	PASS
--------------------------------	------

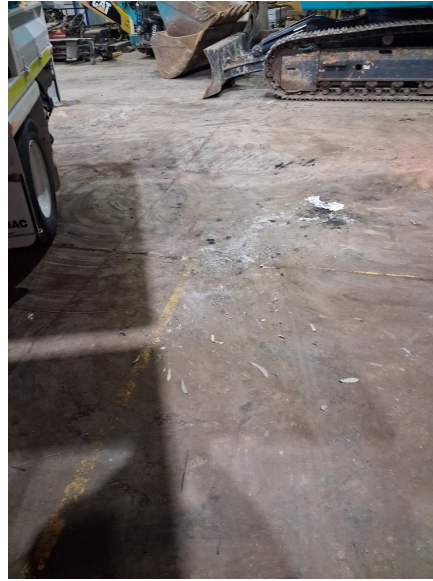
19.1 Hydraulic oil	3
---------------------------	---

19.2 Enggine oil	13
-------------------------	----

19.3 Slew oil	0
----------------------	---

19.4 Gear oil	16
----------------------	----

Site photo



General Info/Comments



General Info/Comments

